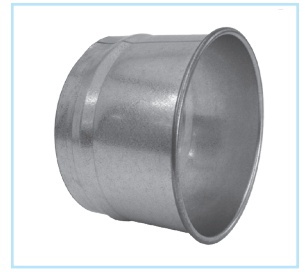


Hose Adapter

Ordering Information

- When ordering, specify material, gauge (if non-standard), dimension and end styles. Standard end styles are QF to RAWFLEX.
- Connects to Rubber Hose. Not compatible with metal flex hose.



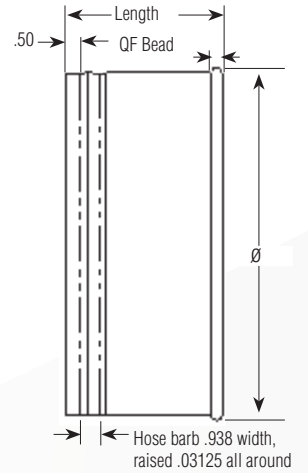
Ø in.	Length in.	Std Weight Lbs
3	5.5	0.60
4	4.0	0.75
5	4.0	0.95
6	4.0	1.10
7	4.0	1.35
8	4.0	1.50
9	4.0	1.75
10	4.0	1.95
11	4.0	2.10
12	4.25	2.30
13	5.25	2.45
14	5.25	2.70
15	5.25	3.05
16	5.25	3.20
17	5.25	3.32
18	5.25	3.45
19	5.25	3.68
20	5.25	3.90
21	5.25	4.10
22	5.25	4.30
23	5.25	4.95
24	5.25	5.60

QF Material Options

Galv				SS			
Gauges	Size (inches)		Gauges	Size (inches)			
	Min. Ø	Max. Ø		Min. Ø	Max. Ø		
Standard	22	3	12	22	3	12	
	20	13	24	20	13	24	
Optional	18	4	24	18	8	24	
	16	8	24	16	8	24	
	14	8	24				

Flanged Material Options

Galv (Std)				SS			
Gauges	Size (inches)		Gauges	Size (inches)			
	Min. Ø	Max. Ø		Min. Ø	Max. Ø		
Standard	22	3	15	22	3	15	
	20	16	40	20	16	40	
Optional	18	26	40	18	26	40	
	16	8	40	16	8	40	
	14	8	50				
	12	10	72				



Construction

Seam: Longitudinal seam is solid laser welded.

Optional End Styles

Standard QF end can be changed to Raw ID (RI), Raw OD (RO), No Fitting (NF), Flat Flange (FFL), Angle Flange (AFL), or Van Stone (VS).

*Published lengths are nominal and may vary slightly.